

# C-type trough mounted photovoltaic panels



IP65/IP55 OUTDOOR CABINET

OUTDOOR TELECOM CABINET

OUTDOOR ENERGY STORAGE CABINET

19 INCH



## Overview

---

The most common form of CSP, the trough system, uses mirrored parabolic troughs to focus the Sun's energy to a receiver tube that is carrying oil. [1,2] The receiver tube is insulated in an evacuated glass envelope and the system moves in tandem with the sun as it crosses the sky (see. Trough solar panels primarily fall into three categories: 1. PARABOLIC TROUGH SYSTEMS Parabolic. Installing solar made easy - The NOVA Ballast System Type-C is a rail-based solar ballast system designed with fewer components for large-scale rooftop solar installations. Built for lasting performance and proven in the field, it offers flexible design options, reliable structural strength, and a clean finished look. Like solar PV mounting rails there are various types, below are a few of the common types: 1. C-channel Rails□This is a. Should PV modules be mounted in portrait or landscape?

You can tell immediately from its shape where our C-rail gets its name from. However, the advantages of our aluminium all-rounder for mounting PV systems on sloping roofs often only become clear during installation. We have summarised the most.

## C-type trough mounted photovoltaic panels

---



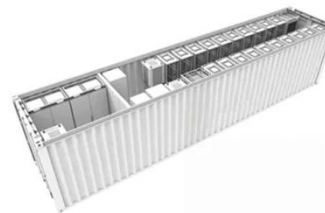
### NOVA Ballast System Type-C

The Ballast System Type-C is suitable for mounting solar panels in the most extreme conditions like heavy snow, ice, and strong winds, while fully compliant with building codes.

[Learn More](#)

### How CSP Works: Tower, Trough, Fresnel or Dish

C-channel Rails: This is a commonly used solar PV racking rail with a C-shaped cross section. It is usually made of high-strength aluminum alloy or galvanized steel with good load bearing ...



[Learn More](#)



### Three Types of Concentrating Solar Panel Systems

The most common form of CSP, the trough system, uses mirrored parabolic troughs to focus the Sun's energy to a receiver tube that is carrying oil. [1,2] The receiver tube is insulated in an evacuated glass envelope and ...

[Learn More](#)

### How CSP Works: Tower, Trough,

## Fresnel or Dish

There are four types of CSP technologies: The earliest in use was trough, and the predominant technology now is tower. This is because tower CSP can attain higher temperatures, resulting in greater efficiency.

[Learn More](#)



## What are the types of trough solar panels? , NenPower

Unlike photovoltaic panels that typically convert solar energy as it arrives, trough systems can retain thermal energy for later use. This is especially beneficial for meeting energy demands during non ...

[Learn More](#)

## Solar panel ground mount U type C type pile foundation

Our solar panel ground mount system is designed for fast, stable, and cost-effective installation of PV modules on open land. With options for U-type and C-type pile foundations, this solution adapts to a wide range of soil ...

[Learn More](#)



 **Efficient Higher Revenue**

- Max. Efficiency 97.5%
- Max. PV Input Voltage 600V
- 150% Peak Output Power
- 2 MPPT Trackers, 150% DC Input Oversizing
- Max. PV Input Current 15A, Compatible with High Power Modules

 **Intelligent Simple O&M**

- IP65 Protection Degree: support outdoor installation
- Smart I-V Curve Diagnosis Function: locate PV string faults accurately and automatically detect faults
- DC & AC Type II SPDs prevent lightning damage
- Battery Reverse Connection Protection

 **Flexible Abundant Configuration**

- Plug & Play, EPS Switching Under 10ms
- Compatible with Lead-acid and Lithium Batteries
- Max. 6 units Inverters Parallel
- AFCC Function (Optional): when an arc fault is detected the inverter immediately stops operation

## SOLARMOUNT®

SOLARMOUNT® is the trusted rail-based racking system for residential and commercial solar installs. Built for lasting performance and proven in the field, it



offers flexible design options, reliable structural strength, and a ...

[Learn More](#)

## Solar PV Mounting Steel , MS

At Mona Steel, we specialize in providing high-quality C-piles for solar energy installation projects. Our C-piles are designed to offer exceptional strength and corrosion resistance, ensuring long-lasting support for solar ...



- IP65/IP55 OUTDOOR CABINET
- OUTDOOR MODULE CABINET
- OUTDOOR ENERGY STORAGE CABINET
- 19 INCH

[Learn More](#)

## Commercial and Industrial ESS

Air Cooling / Liquid Cooling

- Budget Friendly Solution
- Renewable Energy Integration
- Modular Design for Flexible Expansion



## Linear Concentrator System Concentrating Solar-Thermal Power Basics

The most common CSP system in the United States is a linear concentrator that uses parabolic trough collectors. In such a system, the receiver tube is positioned along the focal line of each parabola-shaped ...

[Learn More](#)

## Focus on C-rails , novotegra

As an all-rounder in the novotegra portfolio, the C-rail can be used across multiple systems. In numerous top-fix

sloping roof systems, it serves as a connecting component between the roof and module fastening.

[Learn More](#)



### **Types of Solar PV Mounting Rails**

C-channel Rails: This is a commonly used solar PV racking rail with a C-shaped cross section. It is usually made of high-strength aluminum alloy or galvanized steel with good load bearing capacity and ...

[Learn More](#)

## **Contact Us**

For catalog requests, pricing, or partnerships, please visit:  
<https://v4venison.co.za>

