

# Does the base station wind power supply have a battery

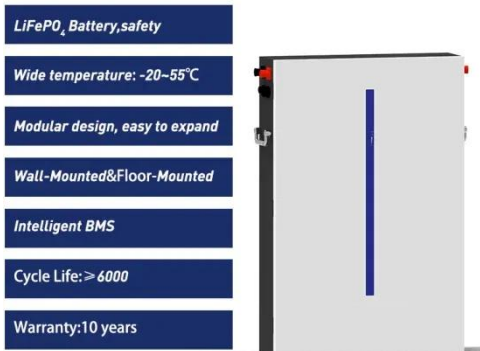


## Overview

---

The Base battery system has three main components: the battery pack, inverter, and hub. This guide covers everything you need to know about how your Base battery operates, protects your home, and supports the power grid. Base batteries run in two directions, which is how Base is able to keep. Wind-solar hybrid systems can reduce reliance on energy storage For a single energy system, such as pure photovoltaic or wind power, a base station needs to be equipped with a 5-7 day energy storage battery. The approach is based on integration of a compr. pioneered LFP along with SunFusion Energy Systems LiFePO4 Ultra-Safe ECHO 2.

## Does the base station wind power supply have a battery



### Solar-Wind Hybrid Power for Base Stations: Why It's Preferred

For a single energy system, such as pure photovoltaic or wind power, a base station needs to be equipped with a 5-7 day energy storage battery. In contrast, wind-solar hybrid ...

[Learn More](#)

### Base station wind power supply application

The wind-solar-diesel hybrid power supply system of the communication base station is composed of a wind turbine, a solar cell module, an integrated controller for hybrid energy



[Learn More](#)



### National Wind Watch , The Grid and Industrial Wind Power

The preferred source that wind power may replace on the grid is hydro power, which is already carbon dioxide free. If a conventional source is replaced, it may simply be ramped down or switched from ...

[Learn More](#)

### How the Base battery works: A

## complete guide to grid connectivity and

Base's battery lifespan is 10-15 years, comparable with other systems. We have also built our batteries to handle extreme Texas weather, making them a reliable long-term energy solution.

[Learn More](#)



## Base station backup power supply wind power generation

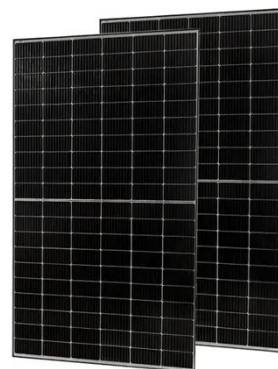
This large-capacity, modular outdoor base station seamlessly integrates photovoltaic, wind power, and energy storage to provide a stable DC48V power supply and optical distribution.

[Learn More](#)

## Base Power Will Install A Residential Storage Battery

The batteries are designed to last 15 years and withstand extreme temperatures and weather, and Base Power owns the battery and handles any maintenance on the system.

[Learn More](#)



## How to replace the wind power battery of the communication ...

Abstract: The battery is the main means of power storage in the power supply system of the communication base station. This article focuses on the

engineering application of the battery

[Learn More](#)



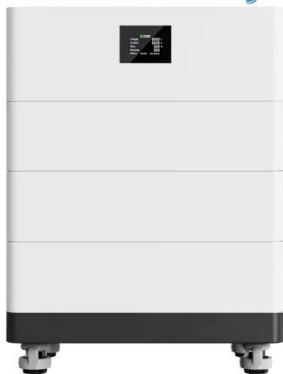
### Optimal sizing of photovoltaic-wind-diesel-battery power supply for

In the following paragraphs, the focus of the literature review will be concentrated on off-grid PV-wind-diesel-battery power supplies that were applied exclusively to mobile telephony base ...

[Learn More](#)



### High Voltage Solar Battery



### Base station wind power supply DC distribution

This 5G base station power supply system integrates battery backup, DC power distribution, and advanced control modules to ensure reliable energy support for critical telecom infrastructure.

[Learn More](#)

### BATTERY LOAD OF BASE STATION WIND POWER SUPPLY

Lithium iron phosphate battery for energy storage base station pioneered LFP along with SunFusion Energy

Systems LiFePO4 Ultra-Safe ECHO 2.0 and Guardian E2.0 home or business energy ...

[Learn More](#)



**TAX FREE** 

### ENERGY STORAGE SYSTEM

**Product Model**  
HJ-ESS-215A(100KW/215KWh)  
HJ-ESS-115A(50KW 115KWh)

**Dimensions**  
1600\*1280\*2200mm  
1600\*1200\*2000mm

**Rated Battery Capacity**  
215KWH/115KWH

**Battery Cooling Method**  
Air Cooled/Liquid Cooled



## Contact Us

For catalog requests, pricing, or partnerships, please visit:  
<https://v4venison.co.za>

