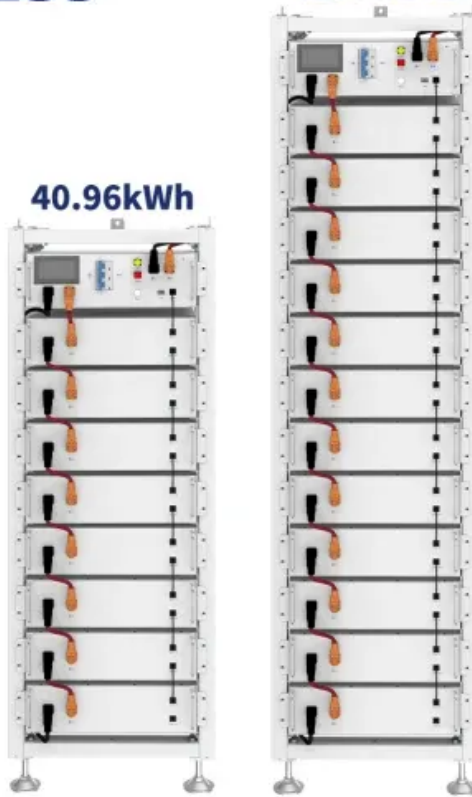


# Environmental issues of communication base station inverters

**ESS**

**61.44kWh**

**40.96kWh**



## Overview

---

This review paper identifies the possible potential solutions for reducing the energy consumption of the networks and discusses the challenges so that more accurate and valid measures could be designed for future research. The environmental cost of deploying a 5G cellular network remains unknown. The paper aims to provide. The imminent danger posed by climate change incites various sectors to reduce their greenhouse gas (GHG) emissions. Should base stations always be connected to the power grid?

Several strategies have been mentioned in the literature to overcome this issue. However, this strategy is not environmentally friendly. As global 5G deployments surge past 3 million units this quarter, a critical question emerges: How can we reconcile this growth with environmental responsibility?

The telecom sector now accounts for 3-5% of worldwide energy consumption, with base stations devouring 60% of that share.

## Environmental issues of communication base station inverters



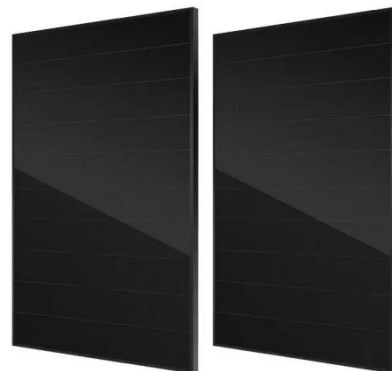
### The Importance of Renewable Energy for Telecommunications Base Stations

The study first reviews the seemingly insatiable demand for energy in telecommunications filtering its historical use against the inefficacy and environmental impact of typical fossil power.

[Learn More](#)

### Investigating the Sustainability of the 5G Base Station Overhaul ...

5G is a high-bandwidth low-latency communication technology that requires deploying new cellular base stations. The environmental cost of deploying a 5G cellula.



[Learn More](#)

#### Outdoor Cabinet BESS

50 kWh/500 kWh Battery Storage System  
Industrial and Commercial Energy Storage



-  **All In One**  
Integrating battery packs
-  **High-capacity**  
50-500kWh
-  **Degree of Protection**  
IP54
-  **Operating Temperature Range**  
-20-60°C(Derating above 50 °C)
-  **Intelligent Integration**  
integrated photovoltaic storage cabinet
-  **Rated AC Power**  
50-100kW
-  **Altitude**  
3000m(>3000m derating)

### Communication base station inverter grid-connected and ...

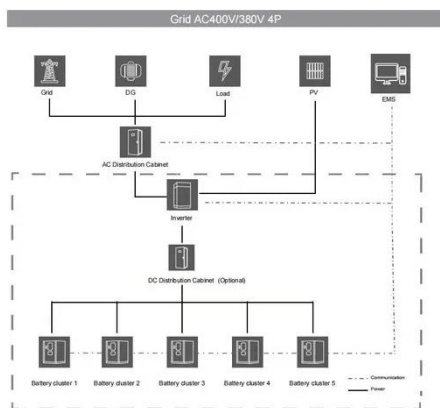
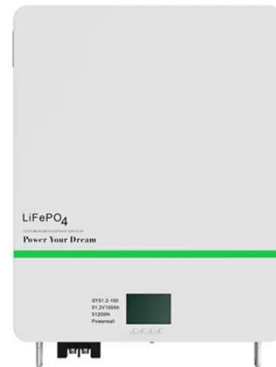
Hybrid power systems were used to minimize the environmental impact of power generation at GSM (global systems for mobile communication) base station sites. This paper presents the

[Learn More](#)

## The Importance of Renewable Energy for ...

The study first reviews the seemingly insatiable demand for energy in telecommunications filtering its historical use against the ...

[Learn More](#)



## Environmental impacts assessment of a cellular base station using a

This study details a Life Cycle Assessment (LCA) approach to assess the environmental impacts of the production phase of a RAN site. Primary data on the composition of the RAN site are acquired with the ...

[Learn More](#)

## Investigating the Sustainability of the 5G Base Station Overhaul in ...

In this work we answer several questions about the environmental impact of 5G deployment, including: Can we reuse minerals from discarded 4G base stations to build 5G or does 5G require new minerals that were not ...

[Learn More](#)



## Communication base station inverter grid connection no ...

This paper aims to address both the sustainability and environmental issues

for cellular base stations in off-grid sites. For cellular network operators, decreasing the

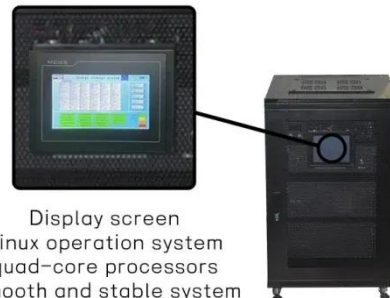
[Learn More](#)



### Communication Base Station Inverter Application

Environmental adaptability: The inverter is designed to be strong enough to adapt to various environmental conditions, which is especially important for communication base stations outdoors or in ...

[Learn More](#)



Display screen  
Linux operation system  
quad-core processors  
smooth and stable system



### Communication Base Station Sustainability , Huijue Group E-Site

Emerging technologies like metamaterial antennas (reducing energy loss by 40%) and self-healing grids could transform base stations from energy drains to sustainable communication hubs.

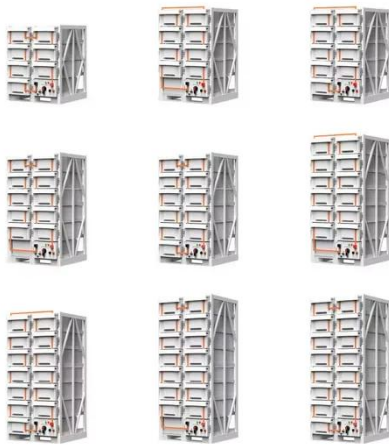
[Learn More](#)

### Energy-efficiency schemes for base stations in 5G

Recognizing this, Mobile Network Operators are actively prioritizing EE for both network maintenance and

environmental stewardship in future cellular networks. The paper aims to provide an outline of energy-efficient ...

[Learn More](#)



### **Low-carbon upgrading to China's communications base stations for**

As China rapidly expands its digital infrastructure, the energy consumed by communication base stations has grown dramatically. Traditionally powered by coal-dominated grid electricity, these stations ...

[Learn More](#)

## **Contact Us**

For catalog requests, pricing, or partnerships, please visit:  
<https://v4venison.co.za>

