

# How big a battery should I use for a 1000w inverter



## How big a battery should I use for a 1000w inverter

---



**Battery String-S224**

- 1C Charge/Discharge
- Easy configuration and maintenance
- Power supply can be single battery string or parallel battery strings

### How Many Batteries For A 1000 Watt Inverter?? + Diagrams

You need one 12V 100Ah battery or four 12V 100Ah lead-acid batteries in parallel to run a 1,000W inverter. We have also calculated the runtime of the inverter with a fridge which was 17 hours.

[Learn More](#)

### What Size Battery Do I Need for a 1000W Inverter?

To power a 1000W inverter, you typically need a battery with a minimum capacity of 100Ah if you plan to run it for about one hour. However, the actual size may vary based on the ...

[Learn More](#)



### How Many Batteries Do I Need For a 1000 Watt Inverter?

This chart shows what battery sizes to use to run a 1000 watt inverter at maximum load. If you are going to use a lead acid battery, use the third column as a guide because they should not be drained below ...

[Learn More](#)



### 1000W Inverter: How Many

## Batteries Do You Really Need?

How many batteries are needed to run a 1000W inverter? To safely run a 1000W inverter on a 12-volt system, you'll need four 12V 100Ah lead-acid batteries connected in parallel.

[Learn More](#)



## How Many Batteries Do I Need for a 1000W Inverter?

Short answer: 1-4 deep cycle batteries, depending on how long you want power. Whether you're prepping for blackouts or juicing up your portable power station, stick around--we'll break ...

[Learn More](#)

## How Many Batteries Do I Need for a 1000W or 2000W Power Inverter?

In this guide, we'll break down the key factors, walk through real-world calculations, and help you choose the right battery setup for your 1000W or 2000W inverter.

[Learn More](#)

- LIQUID/AIR COOLING
- INTELLIGENT INTEGRATION
- PROTECTION IP54/IP55
- BATTERY /6000 CYCLES



## How Many Batteries for 1000Watt Inverter - PowMr

Discover the essentials of determining 'how many batteries for a 1000W inverter' in this comprehensive guide, including battery sizing and runtime

calculations.

[Learn More](#)



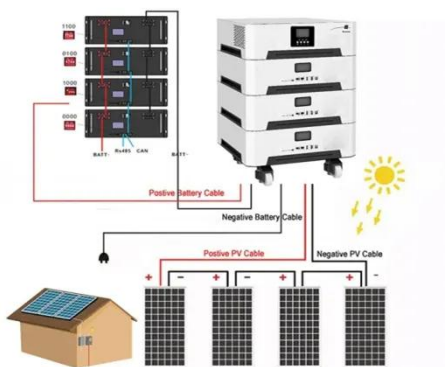
---

## What Size Battery Do You Need for a 1000 Watt Inverter?

Recommendation: For a 1000-watt inverter, lithium iron phosphate (LiFePO4) batteries are often the best choice due to their durability and efficiency. The battery size for a 1000-watt ...



[Learn More](#)



---

## How Many Batteries For A 1000 Watt Inverter?? + Diagrams

Lithium-Ion Batteries Affordable Power Options

[Learn More](#)

---

## How Many Batteries for a 1000-watt Inverter

However, an inverter requires a battery to function, and the size of the battery depends on what appliance you need to

run and how long you need to run it. In this article, we will discuss how to ...

[Learn More](#)



### **Calculate Battery Size For Any Size Inverter (Using Our Calculator)**

So I have made it easy for you, use the calculator below to calculate the battery size for 200 watt, 300 watt, 500 watt, 1000 watt, 2000 watt, 3000 watt, 5000-watt inverter

[Learn More](#)

## **Contact Us**

For catalog requests, pricing, or partnerships, please visit:  
<https://v4venison.co.za>

