

# How big a photovoltaic panel should I use for 135 square meters



## Overview

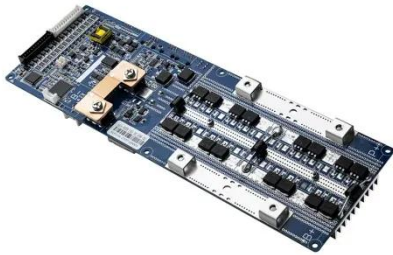
---

The fundamental formula for solar panel system sizing is:  $\text{System Size (kW)} = \text{Daily Energy Need (kWh)} \div (\text{Peak Sun Hours} \times \text{System Derate Factor})$  Using our earlier example:  $\text{System Size} = 30 \div (5.8 \times 0.8) = 6.4 \text{ kW}$  This means you'd need approximately a 7 kW solar system to meet your needs.

**Standard Residential Panels Optimize Space and Handling:** The industry-standard 60-cell panel dimensions (65" × 39" × 1.5") aren't arbitrary - they represent the optimal balance between power output, installation ease, and roof space utilization. They are 7 feet tall and 1 meter wide, and their power output ranges from about 250 W to 400 W depending on the technology. They are 5 feet long, occupying an area of roughly 17.5 sq ft. On average, the amount of required roof space for a set of home solar panels is between 300 sq ft and 500 sq ft total. If you have a 1000 sq ft roof.

## How big a photovoltaic panel should I use for 135 square meters

---



### How Many Square Meters Is One Solar Panel?

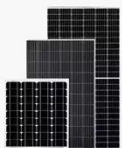
This article will delve into the average size of a solar panel in square meters. We will explore the standard dimensions, the typical energy output associated with these sizes, and how ...

[Learn More](#)

### Solar Panel Size Calculator - Estimate Panel Width

The Solar Panel Size Estimator Calculator is a tool designed to help you determine the appropriate size of solar panels needed for your specific energy requirements.

[Learn More](#)



Solar Panel



PV Combiner Box



Lithium Battery



Hybrid Inverter

### How to Size a Solar System [Step-by-Step Guide]

Learn how to size a solar system for your home. Here's our step-by-step guide on sizing a solar system that meets your energy needs.

[Learn More](#)

### Standard Solar Panel Sizes And Wattages (100W-500W Dimensions)

It takes up 6.07 sq ft of area. If you have a 1000 sq ft roof, and you can use 75% of that roof area for solar panels, you can theoretically put 123 100-watt solar panels on a 1000 sq ft roof. A typical 300

...

[Learn More](#)



## How much area is needed for solar panel installation

Discover how much area is needed for a solar panel installation and how to calculate roof space for solar in this comprehensive guide for homeowners in the U.S.

[Learn More](#)

## Solar Panel System Sizing Guide , Calculate Perfect Home System Size

Learn how to size solar panels for your home correctly. Complete guide with calculations, examples, and professional tools to avoid costly sizing mistakes.

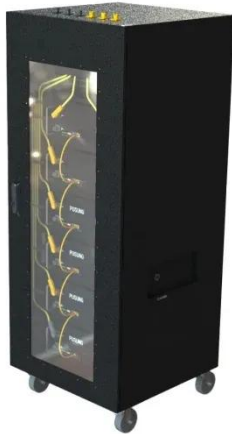
[Learn More](#)



48V 100Ah

## Solar Panel Size & Dimensions Guide 2025 , Complete Specs

In this comprehensive guide, you'll learn everything you need to know about solar panel sizing, from standard dimensions to weight considerations, helping you



determine the perfect solar ...

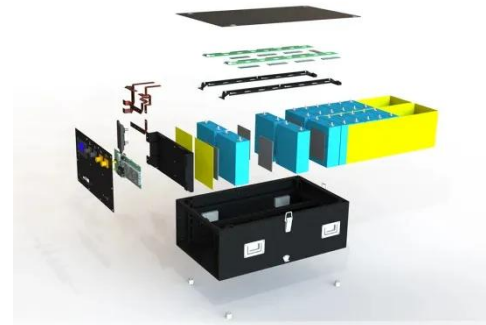
[Learn More](#)

---

## standard solar photovoltaic panel sizes explained

Discover standard solar photovoltaic panel sizes. Choose the perfect fit for your installation with our expert guide. Learn more today!

[Learn More](#)



## Solar Panel Calculator

How much roof space do solar panels need? A typical 400W solar panel requires about 1.7 square meters (18.3 square feet) of space. The calculator will show you the total area needed based on your ...

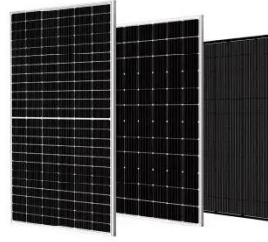
[Learn More](#)

---

## Solar Panel Size Guide , Best Panel Size for Your Roof

Learn how to choose the ideal solar panel size for your home. Get expert tips, standard dimensions, and a size chart to simplify your solar decisions.

[Learn More](#)



---

## Contact Us

---

For catalog requests, pricing, or partnerships, please visit:  
<https://v4venison.co.za>

