

# How much does a 5G base station charge per kilowatt-hour



## How much does a 5G base station charge per kilowatt-hour

---



### HOW MUCH POWER DOES A 5G BASE STATION USE

As of recent data, the average cost of a BESS is approximately \$400-\$600 per kWh. Here's a simple breakdown: This estimation shows that while the battery itself is a significant cost, the other ...

[Learn More](#)

---

### Energy Consumption of 5G, Wireless Systems and the Digital Ecosystem

Exact estimates differ by source, but MTN says the industry consensus is that 5G will double to triple energy consumption for mobile ...



[Learn More](#)

---



### Here's how much a 5G wireless network really costs

Have you ever wondered how much a 5G non-standalone ...

[Learn More](#)

---

### Here's how much a 5G wireless network really costs

Have you ever wondered how much a 5G non-standalone Evolved Packet Core for up to 50,000 subscribers costs, including the installation and everything? Sure you have.

[Learn More](#)



### Here's how much a 5G network really costs

"Through our interviews, we have obtained current cost ranges for equipment, software and services from equipment manufacturers and service providers (e.g., tower crews, attorneys, RF ...

[Learn More](#)

### What is the Power Consumption of a 5G Base Station?

These 5G base stations consume about three times the power of the 4G stations. The main reason for this spike in power consumption is the addition of massive MIMO and beamforming, ...

[Learn More](#)



### Front Line Data Study about 5G Power Consumption

The power consumption of a single 5G station is 2.5 to 3.5 times higher than that of a single 4G station. The main



factor behind this increase in 5G power consumption is the high power usage of the active ...

[Learn More](#)

## Energy Consumption of 5G, Wireless Systems and the Digital Ecosystem

"A 5G base station is generally expected to consume roughly three times as much power as a 4G base station. And more 5G base stations are needed to cover the same area," -IEEE Spectrum, 5G's ...



[Learn More](#)



## Why does 5g base station consume so much power and how to ...

Why does the base station consume electricity? The following presents the results of professional frontline testing, with the power consumption of Huawei and ZTE 5G base stations ...

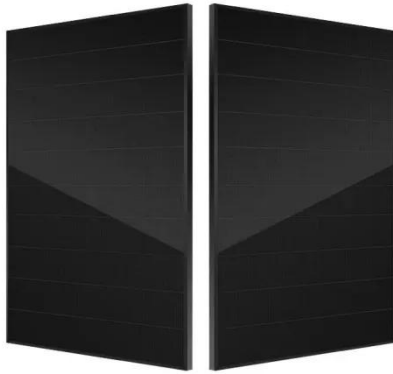
[Learn More](#)

## 5G Infrastructure Costs: What Telcos Are Paying , PatentPC

Setting up a 5G base station is expensive, with costs ranging from \$100,000 to \$200,000 per site. This price includes hardware, installation, site

rental, and maintenance.

[Learn More](#)



### 5G base stations use a lot more energy than 4G base stations: MTN

Exact estimates differ by source, but MTN says the industry consensus is that 5G will double to triple energy consumption for mobile operators, once networks scale. Warnings of more ...

[Learn More](#)

### A Cost Analysis of Deploying Private 5G Networks

The cost of base stations and antennas can range from \$50,000 to \$200,000 based on coverage needs. The number of units required will depend on the area size and the density of users.

[Learn More](#)



## Contact Us

For catalog requests, pricing, or partnerships, please visit:  
<https://v4venison.co.za>

