

Inverter output voltage is directly connected to the ground



Inverter output voltage is directly connected to the ground



Grounding question for inverter. : r/electricians

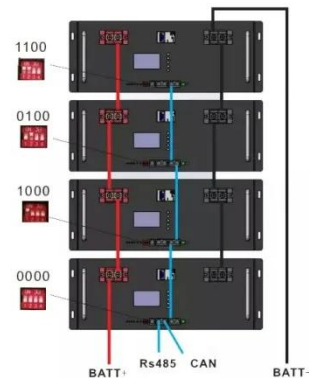
In US residential service, neutral and ground are both connected to true earth ground at the main panel. They connect to the same place, and some people improperly mix them up.

[Learn More](#)

Ground Fault Basics and Inverter Grounding

The inverter AC output terminals supply the Neutral to Ground connection and no other such connections are permitted. All Ground Fault detectors do not need a ground wire connection as ...

[Learn More](#)



7. Ground, earth and electrical safety

Earth is a direct physical connection to the Earth. This is usually done by driving a copper rod (earth stake) into the ground. But, depending on age and location of the system this can also be a copper ...

[Learn More](#)

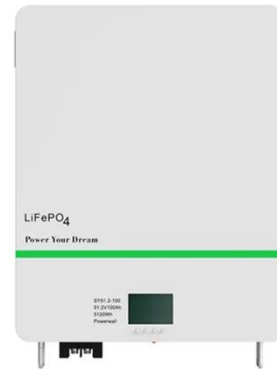


Inverter AC vs DC Side: What to

Ground, Bond, or ...

Clear rules for inverter AC & DC grounding, bonding, and isolation. Practical insights to ensure safe and bankable solar installations.

[Learn More](#)



Need some help with connecting to ground for my inverter!

There is a ground on the AC Output. The ground I have currently is from the ac input. However there is no 'input' for this and connecting it to the Ground connection on the output gives ...

[Learn More](#)

Effective Grounding and Inverter-Based Generation: A "New" ...

Because inverters act as current sources or power sources, an isolated system energized by inverters without loads will have severe overvolt-age, with or without a ground fault, and whether or not ...

[Learn More](#)

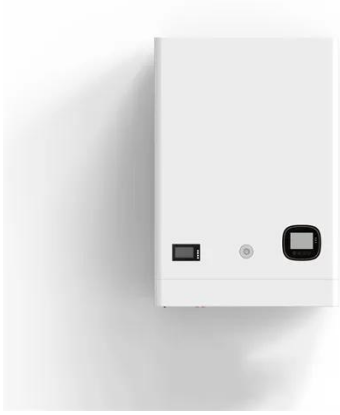


Effective Grounding of Inverter-Based Effective Grounding of

The effective grounding concerns of both three-wire and four-wire inverters can be solved by using the correct transformer

configuration and ground impedance design.

[Learn More](#)



Why don't all inverters have neutral connected to ground?

In my opinion, the modification is very simple and would make the inverter a far better product. So all inverters should have the ground at the neutral output wire. However, not all of them ...

[Learn More](#)



Do You Need To Ground An Inverter? (Safe Measures)

Inverters should always be grounded to a single grounding point. A copper grounding rod must be driven into the ground outside and connected to the single grounding point using a thick ...

[Learn More](#)

Contact Us

For catalog requests, pricing, or partnerships, please visit:
<https://v4venison.co.za>

