

Photovoltaic power station photovoltaic panel installation height



Overview

The average height generally ranges from 3 to 5 feet above the ground. However, this can vary based on several factors, including the type of solar panel system, the local environment, and specific installation requirements. The Renewable Energy Ready Home (RERH) specifications were developed by the U. Environmental Protection Agency (EPA) to assist builders in designing and constructing homes equipped with a set of features that make the installation of solar energy systems after the completion of the home's. Solar panels typically carry warranties of 20 years or more. Scalable and modular-Solar power products can be deployed in many sizes and configurations and can be installed on a building roof or acres of field; providing wide power-handling capabilities, from microwatts to megawatts. 5") aren't arbitrary - they represent the optimal balance between power output, installation ease, and roof space utilization. What size photovoltaic system do I Need?

- 1.

Photovoltaic power station photovoltaic panel installation height



Solar Panel Size & Dimensions Guide 2025 , Complete Specs

Complete guide to solar panel sizes and dimensions. Compare 60-cell vs 72-cell panels, weights, roof space requirements, and installation specs for 2025.

[Learn More](#)

A Guide to Photovoltaic PV System Design and Installation

Dive deep into our comprehensive guide to photovoltaic PV system design and installation. Harness the power of the sun and turn your roof into a mini power station with this insightful resource.

[Learn More](#)



GRADE A BATTERY

LiFePO4 battery will not burn when overcharged or over discharged, overcurrent or short circuit and can withstand high temperatures without decomposition.



Solar Photovoltaic: SPECIFICATION, CHECKLIST AND GUIDE

Install and label a 4' x 4' plywood panel area for mounting an inverter and balance of system components. Install a 1" metal conduit for the DC wire run from the designated array location to the ...

[Learn More](#)

Photovoltaic Structure Installation -

Best Practices

Proper installation of a photovoltaic system requires careful planning, the selection of appropriate materials and technologies, and precise execution at every stage.

[Learn More](#)



A Guide to Large Photovoltaic Powerplant Design

For fixed-tilt panels, the optimal angle may need to be adjusted due to factors like panel soiling, shading, and seasonal irradiation distribution. The higher the panels are tilted, the more they ...

[Learn More](#)

Design and Sizing of Solar Photovoltaic Systems

There are two main types of solar power systems, namely, solar thermal systems that trap heat to warm up water and solar PV systems that convert sunlight directly into electricity as shown in Figure below.

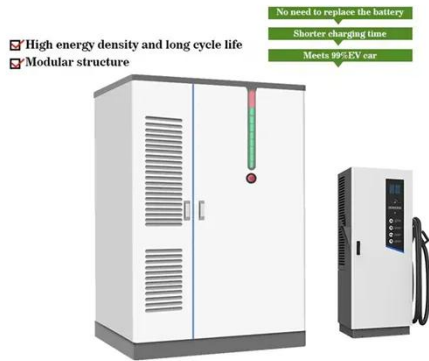
[Learn More](#)



Solar PV Guidline

Identify the criteria for Solar Photovoltaic (PV) installations at APS facilities and Provide guidance to designers and installers of our PV projects.

[Learn More](#)



Photovoltaic Panel Height Standards: What You Need to Know in 2025

The answer lies in photovoltaic panel height standards - the unsung hero of solar efficiency. Recent data from the International Renewable Energy Agency shows properly elevated PV systems yield 18% ...

[Learn More](#)



Standard Specifications for Photovoltaic Panel Height from Ground

Solar panels are placed at a height of 6 to 8 feet above ground level. With a solar pergola design, the solar panel can be readily installed and the extra benefits of providing

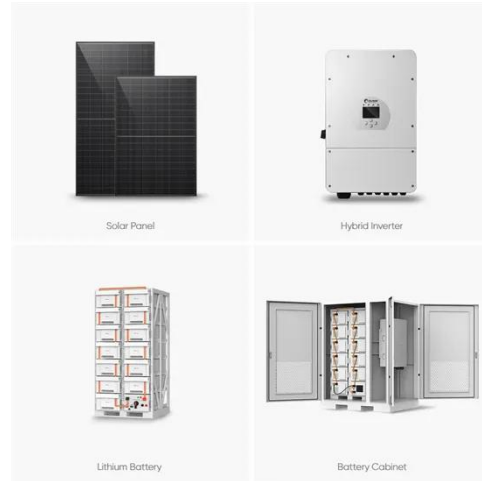
[Learn More](#)

What Is the Average Height of Ground Mounted Solar Panels?

When considering a solar power system

for your home or business, the height at which ground-mounted solar panels are installed can be a crucial factor. The average height of these ...

[Learn More](#)



Contact Us

For catalog requests, pricing, or partnerships, please visit:
<https://v4venison.co.za>

