

Solar container lithium battery pack charged percent



Overview

Manufacturers are required to ship the batteries at a 30% state of charge. This is because they have a low self-discharge rate (less than 3% per month). The LiFePO₄ battery pack is a game-changer for solar energy storage, electric vehicles (EVs), and portable devices, offering unmatched safety and longevity. For beginners, technical terms can feel like a maze. This guide simplifies the 21 essential parameters of a LiFePO₄ battery pack, with. “We charged up our Lithium battery to 14. Lenovo laptops, for example, recommend software settings which stop charging the. However, for today's advanced off-grid battery systems, especially those utilizing Lithium Iron Phosphate (LiFePO₄) technology, the reality is more nuanced. 3 volts after running fridge, freezer etc.

Solar container lithium battery pack charged percent



What percentage should I charge/discharge batteries to?

For Li-ion ones you'd be advised to keep it between 20% and 80% as often as possible. I'm using my battery as I need it. I won't let it go under 10% unless I'm in desperate need, but let it full charge ...

[Learn More](#)

Containerized energy storage , Microgreen.ca

CATL 's 280Ah LiFePO4 (LFP) cell is the safest and most stable chemistry among all types of lithium ion batteries, while achieving 6,000 charging cycles or more.

[Learn More](#)



Myth vs Reality: Do Off-Grid Batteries Need Full 100% Charges?

Many people believe that for off-grid batteries, a full 100% charge is always the goal. This perception often stems from experiences with older battery technologies or a misunderstanding of ...

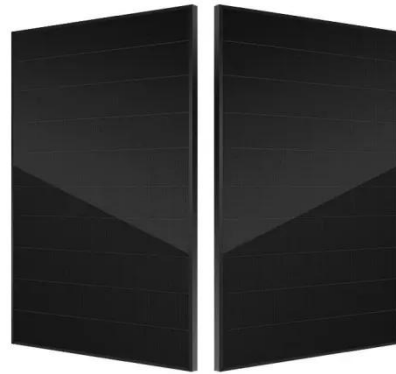
[Learn More](#)

LiFePO4 Voltage Charts (1 Cell, 12V,

24V, 48V)

It charges as much as possible, and when the battery is full, it stops. The Bulk charge will be set at 100% SOC. The battery will be charged until this voltage is reached. The float function for ...

[Learn More](#)



How to Know if Your Solar Battery is Fully Charged (I Found 5 ...

In this comprehensive guide, we'll cover all the signs and tools to accurately determine your solar battery's state of charge. We'll also discuss what affects charging time, how to optimize ...

[Learn More](#)

How to know Lithium battery charge percentage

Automatic reset to 100% when the battery voltage reaches the full voltage and the current has tapered off. Ability to adjust the reading to take into account the battery efficiency.

[Learn More](#)



Utility-Scale Battery Storage , Electricity , 2023 , ATB , NLR

The cost and performance of the battery systems are based on an assumption of approximately one cycle per day. Therefore, a 4-hour device has an



expected capacity factor of 16.7% ($4/24 = 0.167$), ...

[Learn More](#)

LiFePO4 Battery Pack: 2025 Technical Parameters Guide

Battery efficiency is the percentage of energy retained during charge-discharge cycles, typically 95-98% for LiFePO4, compared to lead-acid's 80-85%. For a 100Wh pack, 95-98Wh is usable, minimizing ...



[Learn More](#)



What Batteries Are Solar Containers Using? A Down-to-Earth ...

In 2023, an installer of solar containers deployed over 80 mobile units in rural Kenya. Each container was built with 10 kW solar capacity, a smart EMS, and LiFePO4 battery banks for a ...

[Learn More](#)

Expectations vs. Reality: Making Sense of Battery Voltage & Percentages

This chart, which we've combined together from many online sources, will

help you understand the differences between battery types and their appropriate voltage range and percentage of charge.

[Learn More](#)



Contact Us

For catalog requests, pricing, or partnerships, please visit:
<https://v4venison.co.za>

