

# Solar inverter AC terminal removal



## Overview

---

Summary: This guide explains how to safely remove an inverter AC line for solar energy systems, including tools required, safety protocols, and common mistakes to avoid. Perfect for technicians and DIY enthusiasts working with renewable energy setups. Why Proper Inverter AC Line Removal Matters Did. The process of removing the terminals of solar photovoltaic panels involves several meticulous steps, including: 1. Disconnecting the inverter, and 4. Injuries may result if the product is lifted incorrectly or dropped while being transported or mounted. Set the P/1/0 switch to "0" (OFF). To lock the DCD switch, pull the white tab out away from the blue handle and insert a padlock. To ensure the DC bus is not powered, always turn the AC breaker OFF to disconnect the Solar Inverter from the grid before performing any service work. Enter SetApp and in the Commissioning screen, select Maintenance>Standby Mode>Enable.

## Solar inverter AC terminal removal

---



### Photovoltaic inverter plug removal

For most installations, you will need to turn off the AC disconnect switch from the inverter to the main electrical panel and then the DC disconnect switch from the PV array to the combiner box (if ...

[Learn More](#)

---

### How To Disconnect Solar Panels in 8 Steps , Today's ...

Learn how to safely disconnect solar panels with our step-by-step guide, covering essential tools, safety precautions, and installation tips.

[Learn More](#)



---

### Appendix H: Servicing Solar Inverter

Live voltage may be present on the inverter terminals even when there is no power source from the PV modules. To ensure the DC bus is not powered, always turn the AC breaker OFF to disconnect the ...

[Learn More](#)

---

### TerraMax Inverter AC terminal block



## screw replacement

Using a screwdriver with a 4mm hex bit, remove the M5 screws holding the other ends of the AC aluminum busbars in place and remove the busbars. Be careful NOT to let any screws fall into the ...

[Learn More](#)



## Disconnecting the Terminals from the Inverter

Remove the N and L conductors from the SPS terminals. Remove N, L1, and L2 from the AC terminals. Remove the ferrite. To do this, cut the cable tie. Detach all conduits and remove all cables from the ...

[Learn More](#)

## Solar Inverter Troubleshooting Guide: Common Problems and How to ...

A practical guide to quickly diagnose and fix common solar inverter problems. Learn about error codes, step-by-step troubleshooting, and maintenance tips for home users.

[Learn More](#)



## Replacing the Single Phase HD Wave Inverter

Disconnect the inverter from the Safety Switch by opening the clip that secures

the Safety Switch to the inverter:  
Carefully place a screwdriver between the clip and the enclosure and pull the clip.

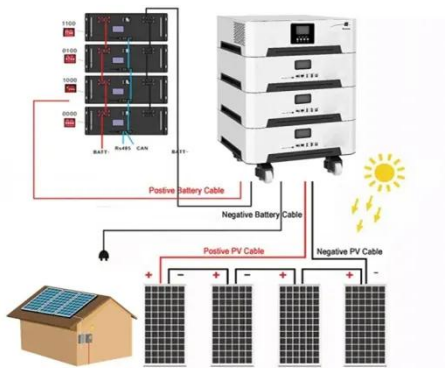
[Learn More](#)



### How to remove the terminals of solar photovoltaic panels

This action significantly reduces the risk of electrical shock and ensures that the solar system is inactive during the terminal removal process. To disconnect the inverter, locate the main ...

[Learn More](#)



### Photovoltaic inverter AC terminal removal

Release and remove the AC connector from the inverter. Hook a flat-blade screwdriver (blade width: 4 mm (0.16 in)) into the wide slot on the plug and lever it open.

[Learn More](#)

### How to Remove the Inverter AC Line: A Step-by-Step Safety Guide

Summary: This guide explains how to safely remove an inverter AC line for solar energy systems, including tools required, safety protocols, and common

mistakes to avoid.

[Learn More](#)



---

## Contact Us

---

For catalog requests, pricing, or partnerships, please visit:  
<https://v4venison.co.za>

