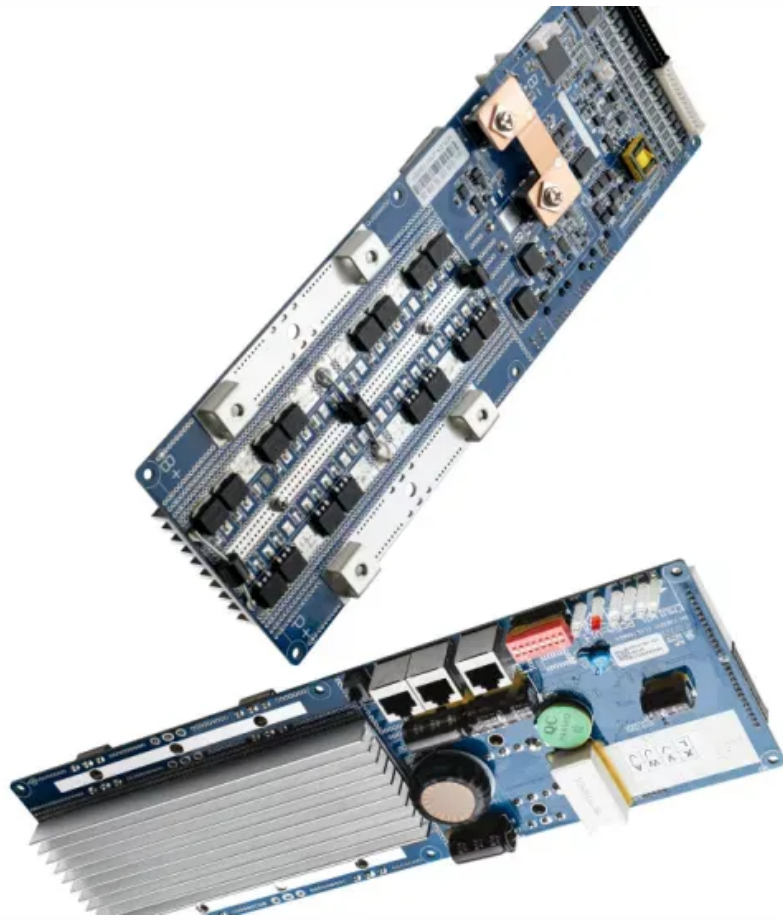


What does base station communication information include



Overview

In cellular networks, a base station typically consists of antennas, a transmitter/receiver system, and a base station controller (BSC). The base station is responsible for maintaining communication with mobile devices within a specific geographical area, known as a cell. What is Base Station?

What is Base Station?

A base station represents an access point for a wireless. A base station is an integral component of wireless communication networks, serving as a central point that manages the transmission and reception of signals between cellular networks and mobile devices. It ensures that users can access voice and data services effectively.

What does base station communication information include



What is a base station?

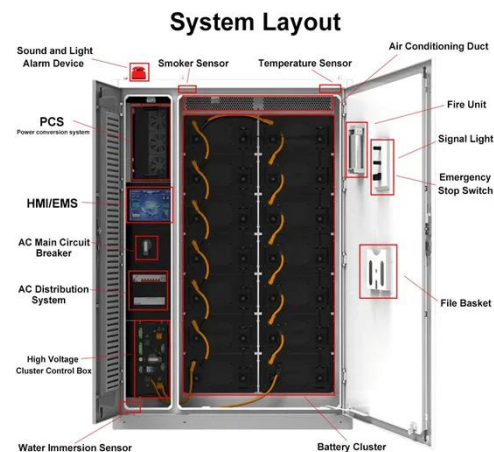
In telecommunications, a base station is a fixed transceiver that is ...

[Learn More](#)

What is a Base Station in Telecommunications?

Base stations are the backbone of modern telecommunications networks, providing the essential infrastructure for wireless communication. They enable mobile devices to connect to the network, ...

[Learn More](#)



What is a Base Station? -- From Communication Core to Thermal ...

Simply put, a base station (BS) is a wireless transceiver device in a mobile communication network that provides wireless coverage and communicates with mobile terminals ...

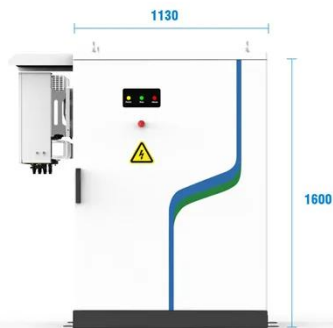
[Learn More](#)



What Is A Base Station?

A base station is an integral component of wireless communication networks, serving as a central point that manages the transmission and reception of signals between cellular networks ...

[Learn More](#)



- 
PV / DG Application
- 
APP Intelligent Control
- 
Multi-Unit Parallel Expansion
- 
98.8% Max. Efficiency

What Is a Base Station? Definition and How It Works

A base station is a fixed transceiver that serves as the central communication point for mobile devices within a defined geographical area, known as a cell. It is sometimes called a cell tower.

[Learn More](#)

Base Stations

Base stations form a key part of modern wireless communication networks because they offer some crucial advantages, such as wide coverage, continuous communications and an array of ...

[Learn More](#)



What are Base Station in Telecommunications?

Base stations contain several key parts. The antenna sends and receives radio energy. The transceiver handles signal modulation. The baseband processor

converts signals to digital form. ...

[Learn More](#)

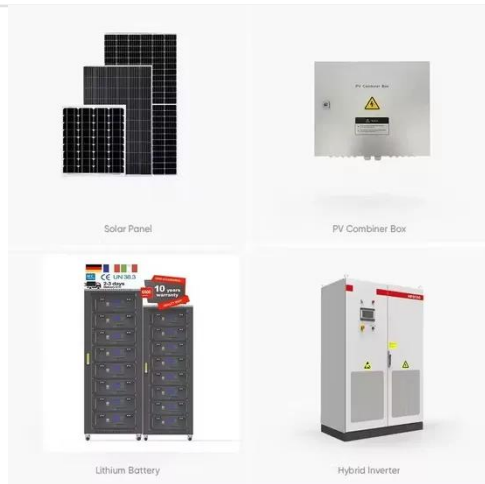


What Is Base Station In Wireless Communication?

In a cellular network, a base station is responsible for providing wireless connectivity to mobile devices within its coverage area, also known as a cell. The base station receives and ...



[Learn More](#)



What Is the Role of a Base Station in Wireless Communication?

Base stations are critical components in wireless communication networks, serving as the intermediary between mobile devices and the core network. They play a vital role in ensuring ...

[Learn More](#)

Understanding Base Stations: The Backbone of Wireless ...

In cellular networks, a base station typically consists of antennas, a transmitter/receiver system, and a base station controller (BSC). The base station

is responsible for maintaining ...

[Learn More](#)



What is a base station?

In telecommunications, a base station is a fixed transceiver that is the main communication point for one or more wireless mobile client devices. A base station serves as a ...

[Learn More](#)

Contact Us

For catalog requests, pricing, or partnerships, please visit:
<https://v4venison.co.za>

