

Wind-gathering and speed-increasing wind power generation device

 **TAX FREE**    

Product Model
HJ-ESS-215A(100KW/215KWh)
HJ-ESS-115A(50KW 115KWh)

Dimensions
1600*1280*2200mm
1600*1200*2000mm

Rated Battery Capacity
215KWH/115KWH

Battery Cooling Method
Air Cooled/Liquid Cooled



ENERGY STORAGE SYSTEM



Overview

The wind power speed-increasing device for wind-gathering electricity generation is stable in structure, high in strength, and capable of carrying out effective control over the wind speed of an outlet, facilitates full use and optimization of wind energy, is large in. The wind power speed-increasing device for wind-gathering electricity generation is stable in structure, high in strength, and capable of carrying out effective control over the wind speed of an outlet, facilitates full use and optimization of wind energy, is large in. The utility model relates to a wind power speed-increasing device for wind-gathering electricity generation. Particularly, the wind power speed-increasing device for wind-gathering electricity generation has the function of carrying out gathering, flow branching, compression and acceleration on the. A speed-increasing device and wind-gathering technology, used in wind power generation, wind turbine components, wind turbines, etc., can solve the problems of large volume, difficult to manufacture, and inability to control and adjust. But this wind power generation system still has the following. The Wind Power Generation Speed-increasing Gearbox is a key component that boosts turbine efficiency by increasing rotational speeds, enabling better energy conversion. From. Harnessing wind energy can contribute substantially to the generation of clean and low-carbon electricity⁶. The speed increasing device is. If it is applied to a small computer, although its power generation efficiency can be improved, but because of its large size, the disadvantages brought about by the increase in material costs, engineering costs, and operating costs are greater than the increase in power generation efficiency.

Wind-gathering and speed-increasing wind power generation device



A wind-gathering wind power generation device

The wind gathering type wind power generation device is composed of a wind wheel/electric generator combination, a wind gathering channel and a tower frame, wherein the wind

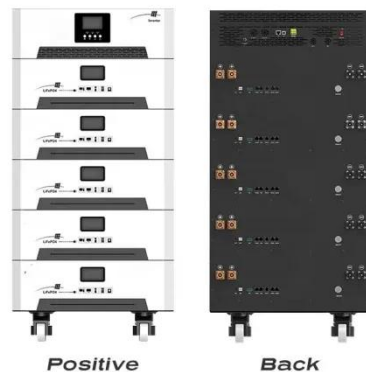
[Learn More](#)

Starting performance effect of a truncated-cone-shaped wind ...

In order to improve the starting performance of straight-bladed vertical axis wind turbine (SB-VAWT), an innovative truncated-cone-shaped wind gathering device (WGD) which could be

...

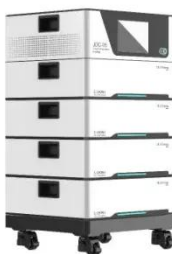
[Learn More](#)



Power electronics in wind generation systems

In this Review, we first present the achievements of wind energy development over the past three decades.

[Learn More](#)

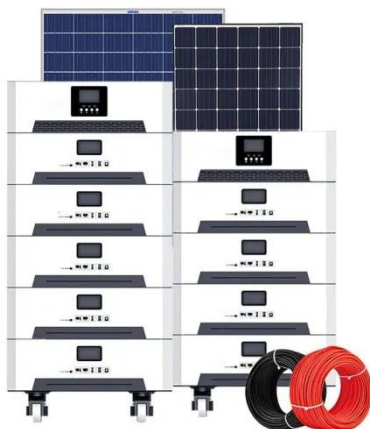


Wind force speeder used for

gathering air and generating electricity

A speed-increasing device and wind-gathering technology, used in wind power generation, wind turbine components, wind turbines, etc., can solve the problems of large volume, difficult to ...

[Learn More](#)



CN102562467A

The invention provides a wind gathering and accelerating wind power generation device which comprises a base, a down-draught drum, a wind gathering tower, a wind turbine, a wind

[Learn More](#)

CN101363414A

The invention has a name of a wind-collection speed-increasing typed wind power generator, relating to the utilization of new energy. The wind-collection speed-increasing typed

[Learn More](#)



Wind gathering and accelerating wind power generation device

The present invention provides a wind-growth wind power generator, comprising a base, pulling duct, wind-towers, wind turbines, wind-up



mechanism, the vertical magnetic generators and magnetic ...

[Learn More](#)

CN203146239U

The wind power speed-increasing device for wind-gathering electricity generation comprises a wind gathering cylinder which is a vertically-arranged straight cylinder.

[Learn More](#)



Wind Power Generation Speed-increasing Gearbox in the Real

The Wind Power Generation Speed-increasing Gearbox is a specialized mechanical device that connects the low-speed rotor of a wind turbine to the high-speed generator.

[Learn More](#)

Wind gathering device for improving efficiency of air blower or wind

The invention discloses a wind gathering device which can increase air quantity and improve the efficiency of an air blower, and belongs to the technical field

of wind energy utilization.

[Learn More](#)



Contact Us

For catalog requests, pricing, or partnerships, please visit:
<https://v4venison.co.za>

