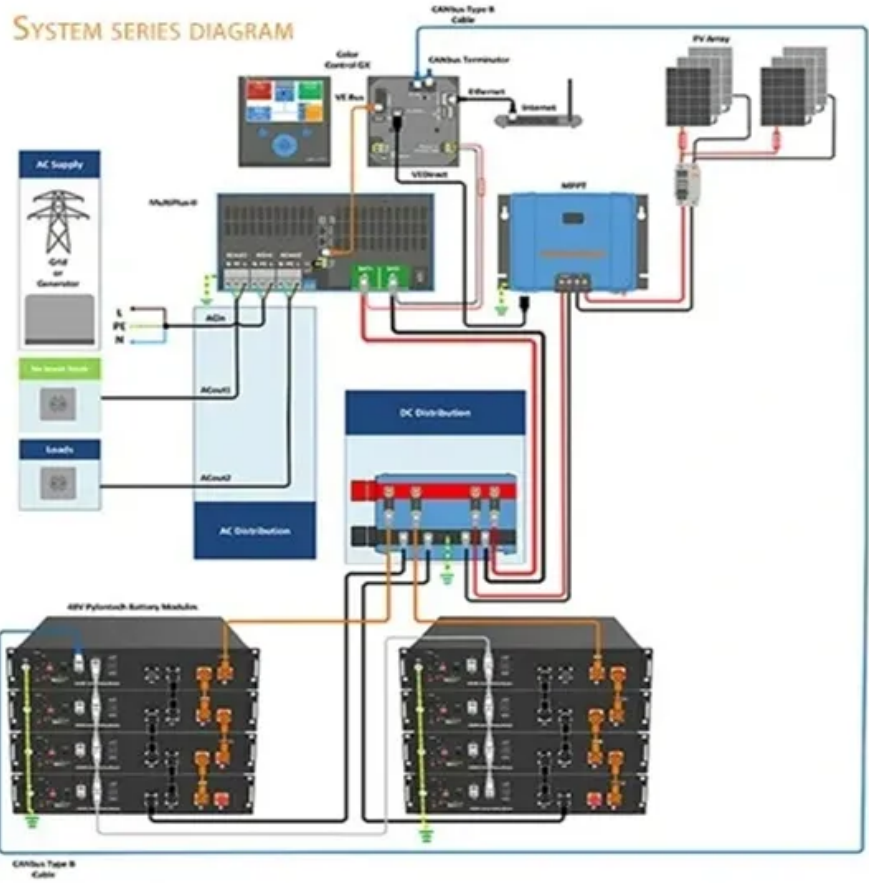


# Work of communication network base stations



## Work of communication network base stations

---



### What Is a Base Station? Definition and How It Works

Beyond signal transmission, base stations perform complex tasks to manage network traffic and ensure continuous, reliable service. A primary function involves resource allocation, where ...

[Learn More](#)

### Base Stations

Base stations form a key part of modern wireless communication networks because they offer some crucial advantages, such as wide coverage, continuous communications and an array of ...

[Learn More](#)

114KWh ESS



### What is a Base Station in Telecommunications?

Discover the role and functionality of a base station in telecommunications networks. Learn how these critical components manage communication between mobile devices and the network, ensuring ...

[Learn More](#)

### Understanding Base Stations: The



## Backbone of Wireless ...

Base stations are the backbone of modern wireless communication networks. They ensure that mobile devices can connect to the internet, make calls, and send data without interruption.

[Learn More](#)



## What are Base Station in Telecommunications?

The Backbone of Wireless Networks A base station connects your phone to the network. It acts as a hub between mobile devices and the core system. Base stations form the backbone of ...

[Learn More](#)

## What Is A Base Station?

A base station is an integral component of wireless communication networks, serving as a central point that manages the transmission and reception of signals between cellular networks ...

[Learn More](#)

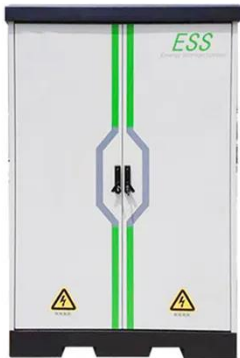


## What Is a Base Station? Exploring the Core of 5G Networks and ...

Definition and Basic Functions of a Base Station What is a base station? Simply put, a base station (BS) is a wireless transceiver device in a mobile

communication network that provides ...

[Learn More](#)



### What Is the Role of a Base Station in Wireless Communication?

Base stations are critical components in wireless communication networks, serving as the intermediary between mobile devices and the core network. They play a vital role in ensuring ...

[Learn More](#)

 TAX FREE

**Product Model**  
HJ-ESS-215A(100KW/215KWh)  
HJ-ESS-115A(50KW 115KWh)

**Dimensions**  
1600\*1280\*2200mm  
1600\*1200\*2000mm

**Rated Battery Capacity**  
215KWH/115KWH

**Battery Cooling Method**  
Air Cooled/Liquid Cooled



**ENERGY STORAGE SYSTEM**



### Base Station's Role in Wireless Communication Networks , Lenovo US

The base station transmits and receives signals, ensuring seamless communication over radio frequencies. In essence, it acts as the intermediary between the user and the network, enabling ...

[Learn More](#)

### What Is a Telecom Base Station and How Does It Work?

In simple terms, the base station uses radio signals to cover a certain

geographic area, allowing mobile devices within this area to connect to the communication network and the internet through the mobile ...

[Learn More](#)



---

## Contact Us

For catalog requests, pricing, or partnerships, please visit:  
<https://v4venison.co.za>

